



Welcome Home

we're better together

PLANNING FOR THE FUTURE:
PHASE II IMPROVEMENTS FOR ST. MARY'S PARISH



PLANNING FOR THE FUTURE:

PHASE II IMPROVEMENTS FOR ST. MARY'S PARISH

St. Mary's is a COMMUNITY that is growing in numbers, faith, activity, and spirit. In order to continue our tradition of being a WELCOMING and VIBRANT parish, we are embarking on the second phase of a campus improvement project that continues the momentum from before the Covid-19 pandemic.

Phase I kicked off much-needed improvements

The first phase of improvements included updates to our worship space with new windows and carpeting, an improved HVAC system, and complete repayment of our debt with the diocese left from previous projects. St. Mary's parishioners generously donated \$2.1 million for the Phase I projects. Although Phase II was delayed, our St. Mary's community has shown tremendous support for continuing our plans in two town hall meetings and online feedback forms.

Our parish family shared feedback & ideas

Parish feedback, research, and suggestions have shaped Phase II to include the following improvements:

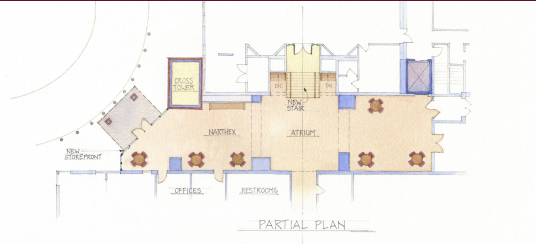
- New, expanded atrium with a raised ceiling/roof
- Cross tower that will identify our church
- Larger elevator to accommodate a funeral casket
- Remodeled first-floor restrooms that are ADA compliant and spacious enough for bridal parties
- Widened landing at the top of church entry steps
- Removable center handrail on church entry steps
- Awning to provide weather protection for drop-off
- Expanded parish gathering and office space

We've done it before... We can do it again!

St. Mary's is independently conducting a \$2 million capital campaign to raise the funds for Phase II campus improvements. We will need the support of every new and long-time parish family to complete the new construction and remodeling projects. Many have already pledged their support at even higher levels than Phase I. Please prayerfully consider how you can help!

ST. MARY'S PARISH & SCHOOL

THE FIRST CATHOLIC PARISH OF EDWARDSVILLE, IL



Preliminary designs help capture how a new, expanded atrium might accommodate luncheons, meetings, and donut Sundays. Larger restrooms will be ADA compliant and ideal for bridal parties.

From Children's Liturgy to parish meetings to joining friends for coffee, the open gathering space of our entryway will provide the perfect venue for highlighting the ministries, organizations, and people that make St. Mary's Parish a vibrant and welcoming community.



The raised roofline will fix our poor drainage and leaky ceiling as well as enhance the overall aesthetic.

The cross tower and welcoming parish office will identify St. Mary's and offer security and professionalism. The covered walkway provides a safe, dry church entry and exit.





ST. MARY'S PARISH & SCHOOL

1802 Madison Avenue | Edwardsville, IL 62025

618-656-4857

www.stmaryedw.org